

## Wolf Easy Wrap Apron



Wolf's Easy Wrap Apron is easy to put-on, adjust and take off. The Easy Wrap features two side velcro closures so you can adjust the fit more evenly. The Easy Wrap is now available with no lead (less 30% weight). To order place NL after stock number. Available in 11 colors and 4 new patterns.

- 6920-65021 Middleweight, .5mm, 24" x 33"
- 6920-65023 Middleweight, .5mm, 24" x 35"
- 6920-65025 Ladies style Middleweight, .5mm, 24" x 30"

## Lead Gloves



Wolf protective gloves are a Five Finger molded lead glove covered in resilient brown Naugahyde. Supple enough to pick up small objects, the Naugahyde resists wear and corrosion.

- 6920-12420 12", .25mm lead protection
- 6920-12419 12", .5mm lead protection
- 6920-12422 15", .5mm lead protection

## Wolf Tri-Rak



Wolf's wall mounted Tri-Rak holds a protective apron and a pair of protective gloves (any brand). Specifications: 16"H x 28"W x 8"D.

- 6920-16400 Tri-Rak

## Wolf Sof-T Thyroid Collar



Wolf's Thyroid Collar provides the ultimate protection to the neck area for the health care provider or patient. The collar is held in place

by a velcro closure and is available in Teal (#14), Powder Blue (#15) and Navy (#22). Place the number of your color choice after the stock number.

- 6920-75070 .5mm Lead Equivalency Protection

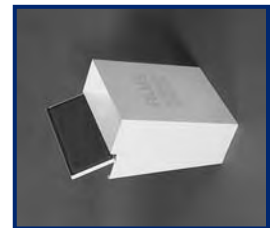
## Wolf's ID Printers & Cards



The Auto ID printer has an adjustable exposure timer. Set the timer, insert the ID card, and press the exposure plate. The Manual ID printer operates the same but does not have an adjustable exposure timer. They both operate on 110/120 AC. Our 3" x 5" ID cards come printed with blanks for patient ID, and can be custom imprinted with your name and address (1,000 per box).

- 6920-17105 Auto ID Printer 8"W x 8"D x 3"H
- 6920-17104 Manual ID Printer 8"W x 8"D x 3"H
- 6920-15100 Standard ID Printer Cards 3" x 5"
- 6920-15102 Custom ID Printer Cards 3" x 5"

## Table Top Bin



These film bins can be mounted on the side of a desk via keyholes. 2 sizes available: the standard holds up to 150 14" x 17" films, the mammo holds up to 150 mammo films. Door closes automatically.

- 6920-25120 Standard 19"L x 15-1/2"W x 11-1/2"H
- 6920-25121 Mammo 13-1/4"L x 12-1/2"W x 10-1/2"H

## Darkroom Swivel Safelight

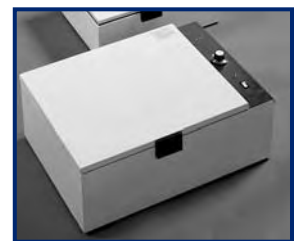


This wall mounted unit swivels to any position. Easy to install via 2 keyholes, includes a GBX type filter, light bulb, and a 6' cord with a three prong plug.

Specifications: 7-1/2"H x 6" W. Available with a sensor that turns safelight on when the room light is shut off.

- 6920-19198 Darkroom Swivel Safelight
- 6920-19298 Darkroom Swivel Safelight with Auto-shutoff Sensor

## Wolf Film Duplicators



Constructed of stainless steel finished in baked enamel, Wolf duplicators can be used with any available duplicating film.

- 6920-21520 6" x 12", dupe. area 18-1/4"L x 8"W x 6-1/4"H
- 6920-21522 10" x 12", dupe. area 18-1/4"L x 12"W x 6-1/4"H
- 6920-21524 14" x 17", dupe. area 23-1/4"L x 16"W x 9"H



## Trimline Series Illuminators

Wolf's Trimline is the perfect viewbox for any office or Hospital. Trimlines come in your choice of lighting intensities. You can choose from 2, 3, 4 or even 6 bulbs per viewing section, (14 x17). All come with film activated auto switches and roller grip film retainers. Trimline's are only 3-1/4"

deep; perfect for either surface or recess installation (recess kits sold separately). Any Trimline style can be ordered in multiple configurations (call for information). Cluster switching standard on multiple bank models higher than 2 over 2. All Trimlines are UL and CSA approved. Single bank 14 x 17".

- 6920-29001 Trimline Plus Hi-Lo (6 bulbs per section)
  - 6920-29401 Trimline Plus (4 bulbs per section)
  - 6920-23401 Trimline 3 bulb (3 bulbs per section)
  - 6920-21401 Trimline Regular (2 bulbs per section)
- For 2 panel units replace the last number (1) with a 2 on any models listed above.



## Econoline Series Illuminators

The most economical illuminator available, The Wolf Econoline features two 15 watt fluorescent lamps and instant-on ballast to assure flicker free operation, and uniform light intensity. The Econoline's 3 inch depth makes it easy to wall mount. The Econoline comes with a baked on white finish, a magic grip film retainer and an 8' line cord with a 3 prong plug.

- 6920-29601 Single, 14"L x 17"H, Unit 14-1/8"L x 18-1/8"H
- 6920-29602 2 in 1, 28"L x 17"H, Unit 28-1/4"L x 18-1/8"H
- 6920-29603 3 in 1, 42"L x 17"H, Unit 42-3/8"L x 18-1/8"H
- 6920-29604 4 in 1, 56"L x 17"H, Unit 56-1/2"L x 18-1/8"H



## Wolf Liberator Illuminator

The new Liberator series is the most unique viewbox ever made! The grip assembly is attached to the plexiglass for perfect film grip tension, and the entire panel is held in place magnetically for quick and easy access! You can order your Liberator in 4 or 6 bulbs per viewing section, (14 x 17). Comes with film activated auto switches and roller grip film retainers standard.

Liberator's are only 3-1/4" deep; perfect for either surface or recess installation (recess kits sold separately). Either Liberator style can be ordered in multiple configurations (call for additional information). Cluster switching standard on multiple bank models higher than 2 over 2. Liberators are UL & CSA approved. Single bank 14 x 17".

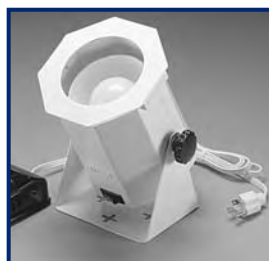
- 6920-22901 Liberator Hi-Lo (6 bulbs per section)
  - 6920-22801 Liberator (4 bulbs per section)
- For 2 panel units replace the last number (1) with a 2 on any models listed above.



## Wolf Trimline Spinal Illuminators

Wolf's Super Illuminator features a full 14" x 36" or 14" x 51" plexiglass viewing area, 3 bulb (30 watts each) illumination, roller grip film retainer, an 8' line cord with 3 prong plug and rocker switch. Wolf's E-"Z" Bar® is provided for easy wall mounting. Manufactured from welded steel, the 36 is finished in white baked enamel, surface or recess mounting.

- 6920-29280 Single 14"L x 36"H, Unit 14"L x 42" H
- 6920-29281 2 in 1 28"L x 36"H, Unit 28"L x 42" H
- 6920-29282 Single 14"L x 51"H, Unit 14"L x 55-5/8" H



## Wolf Intensi-Spot

Wolf's Intensi-Spot provides a concentrated light source via a 75-watt incandescent lamp. Features include a body that tilts to any angle, a baked enamel finish, a 6' cord with

a 3 prong plug and a foot operated light control. The Intensi-Spot can be desk mounted or wall hung.

- 6920-21275 9"H x 6"D

## Thickness Caliper

This aluminum caliper is calibrated in inches and centimeters, the perfect instrument for measuring areas to be x-rayed. Specifications: 17-1/4"L x 1"W x 10-1/8"D.

- 6920-18106 Thickness Caliper

